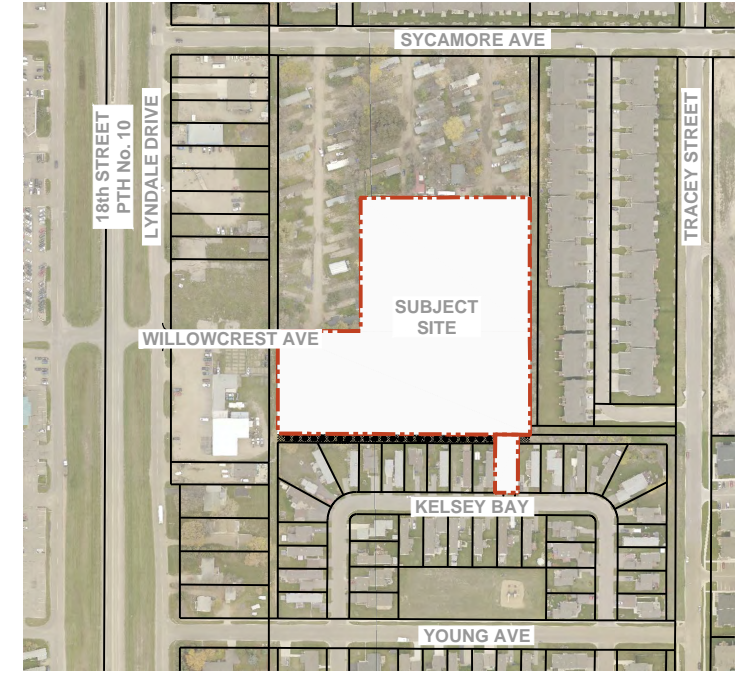


SITE PLAN
SCALE: 1:500



GENERAL NOTES:
1. SITE PLAN BASED ON DETAILED PLAN PROVIDED BY EVERGREEN DEVELOPMENTS LTD. FOR BUILDING DETAILS REFERENCE THE EVERGREEN DEVELOPMENTS SITE PLAN.



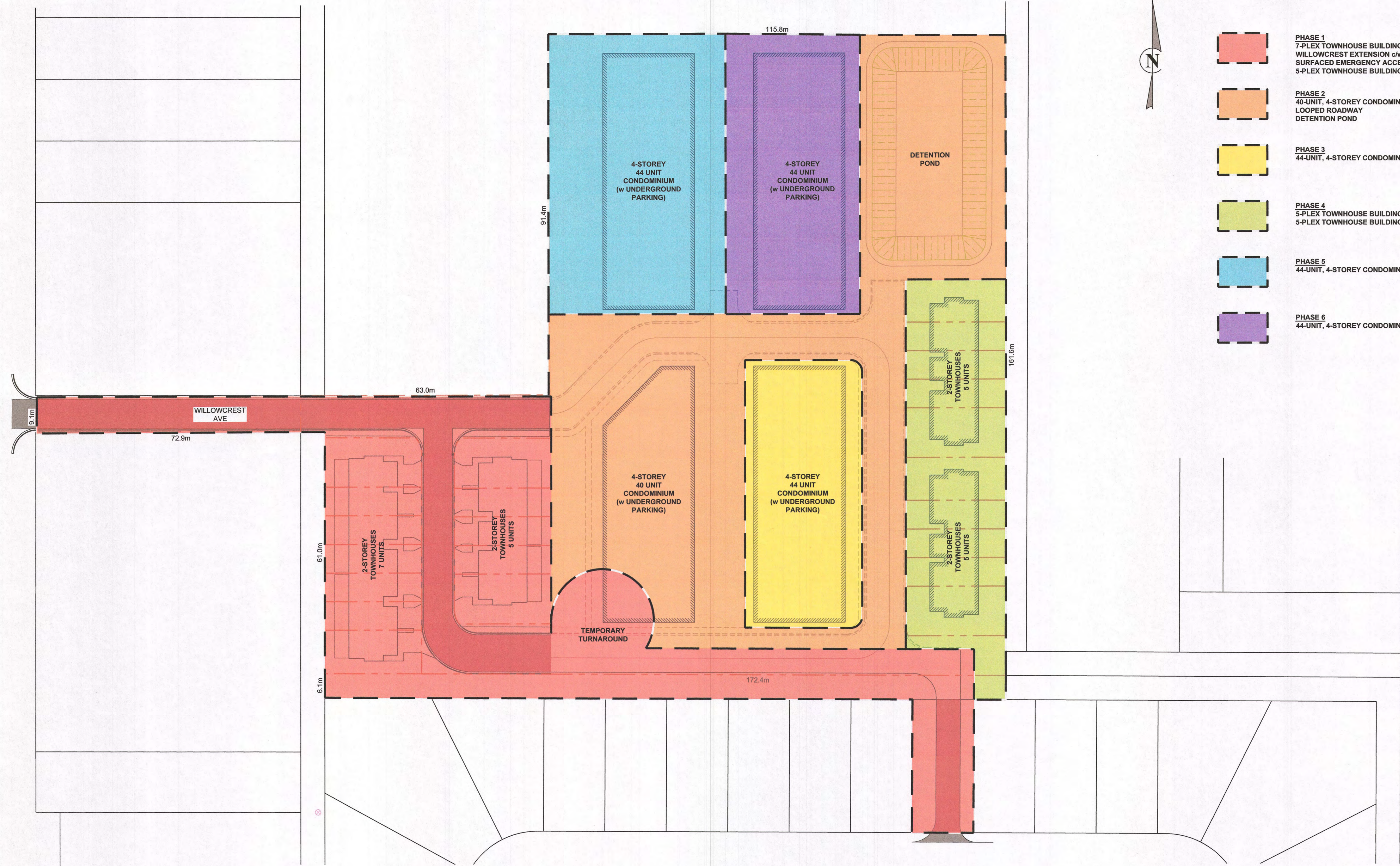
SURROUNDING SITE PLAN
SCALE: 1:2500

NO.	DATE	APP.	BY	DESCRIPTION
D	APRIL 10, 2017	DAB	CR	REVISED EMERGENCY ACCESS
C	FEB 24, 2017	DAB	CR	ISSUED FOR SUBDIVISION APPLICATION
B	FEB 17, 2017	DAB	CR	ISSUED FOR SITE DESIGN ANALYSIS
A	JAN 26, 2017	DAB	CR	ISSUED FOR CLIENT REVIEW

REVISIONS

DESIGNED BY: CR	REVIEWED BY: DAB	PROJECT NAME: BRANDON EVERGREEN ENT. LTD. 21 WILLOWCREST AVE BRANDON, MANITOBA	DRAWING TITLE: SITE PLAN	
DRAWN BY: CR	PROJECT START DATE: NOVEMBER, 2016	<p>1331 Princess Ave. Brandon, Manitoba R7A 0R4 Tel: (204) 728-7364 Fax: (204) 728-4418</p>	PROJECT NUMBER: BMCE-16-184	
PLOT SIZE: A1 (594x841)	SCALE: AS NOTED			DRAWING NO: C1.2

Attachment D-1



- PHASE 1**
7-PLEX TOWNHOUSE BUILDING
WILLOWCREST EXTENSION c/w TEMPORARY GRAVEL SURFACED EMERGENCY ACCESS AND TURNAROUND
5-PLEX TOWNHOUSE BUILDING
- PHASE 2**
40-UNIT, 4-STORY CONDOMINIUM
LOOPED ROADWAY
DETENTION POND
- PHASE 3**
44-UNIT, 4-STORY CONDOMINIUM
- PHASE 4**
5-PLEX TOWNHOUSE BUILDING
5-PLEX TOWNHOUSE BUILDING
- PHASE 5**
44-UNIT, 4-STORY CONDOMINIUM
- PHASE 6**
44-UNIT, 4-STORY CONDOMINIUM

NO.	DATE	APP.	BY	DESCRIPTION
1	SEPT 5, 2017	DAB	CR	REVISED PHASE 1
0	AUG 24, 2017	DAB	CR	ISSUED FOR CONSTRUCTION
REVISIONS				

REVIEWED FOR CONSTRUCTION
CITY OF BRANDON
Development Services Division
Engineering Department
DATE October 16, 2017
For ENGINEER Marc Chagnon

APEGM
Certificate of Authorization
Burns Maendel Consulting
Engineers Ltd.
No. 4559 Expiry: April 30, 2018



DESIGNED BY: CR
REVIEWED BY: DAB
DRAWN BY: CR
PROJECT START DATE: NOVEMBER, 2016
PLOT SIZE: A1 (594x841)
SCALE: 1:500

PROJECT NAME:
BRANDON EVERGREEN ENT. LTD.
21 WILLOWCREST AVE
BRANDON, MANITOBA

BURNS MAENDEL
CONSULTING ENGINEERS LTD.

1331 Princess Ave.
Brandon, Manitoba
R7A 0R4
Tel: (204) 728-7364
Fax: (204) 728-4418

DRAWING TITLE:
PHASING PLAN

PROJECT NUMBER: **BMCE-16-184**
DRAWING NO.: **C1.7**