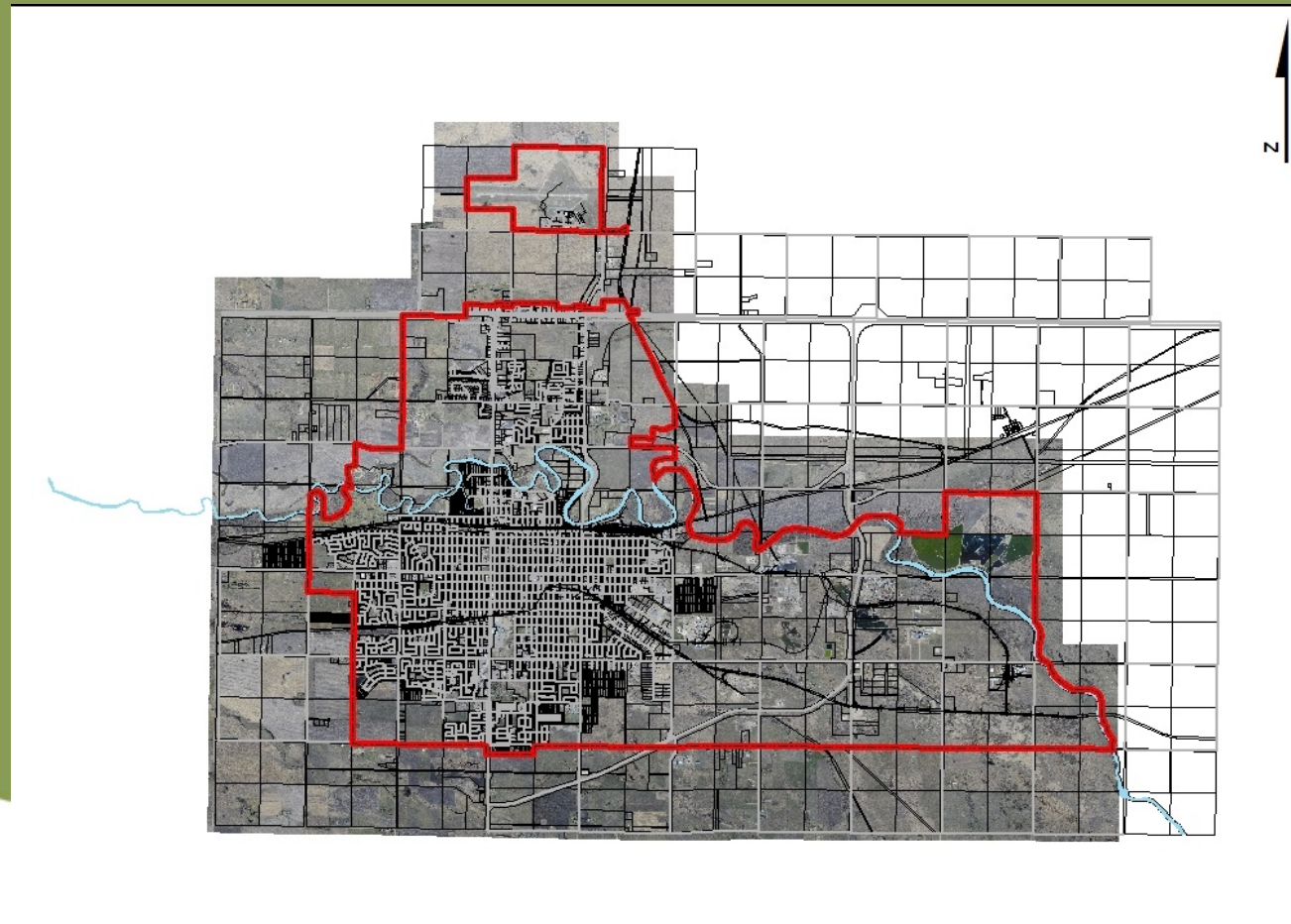
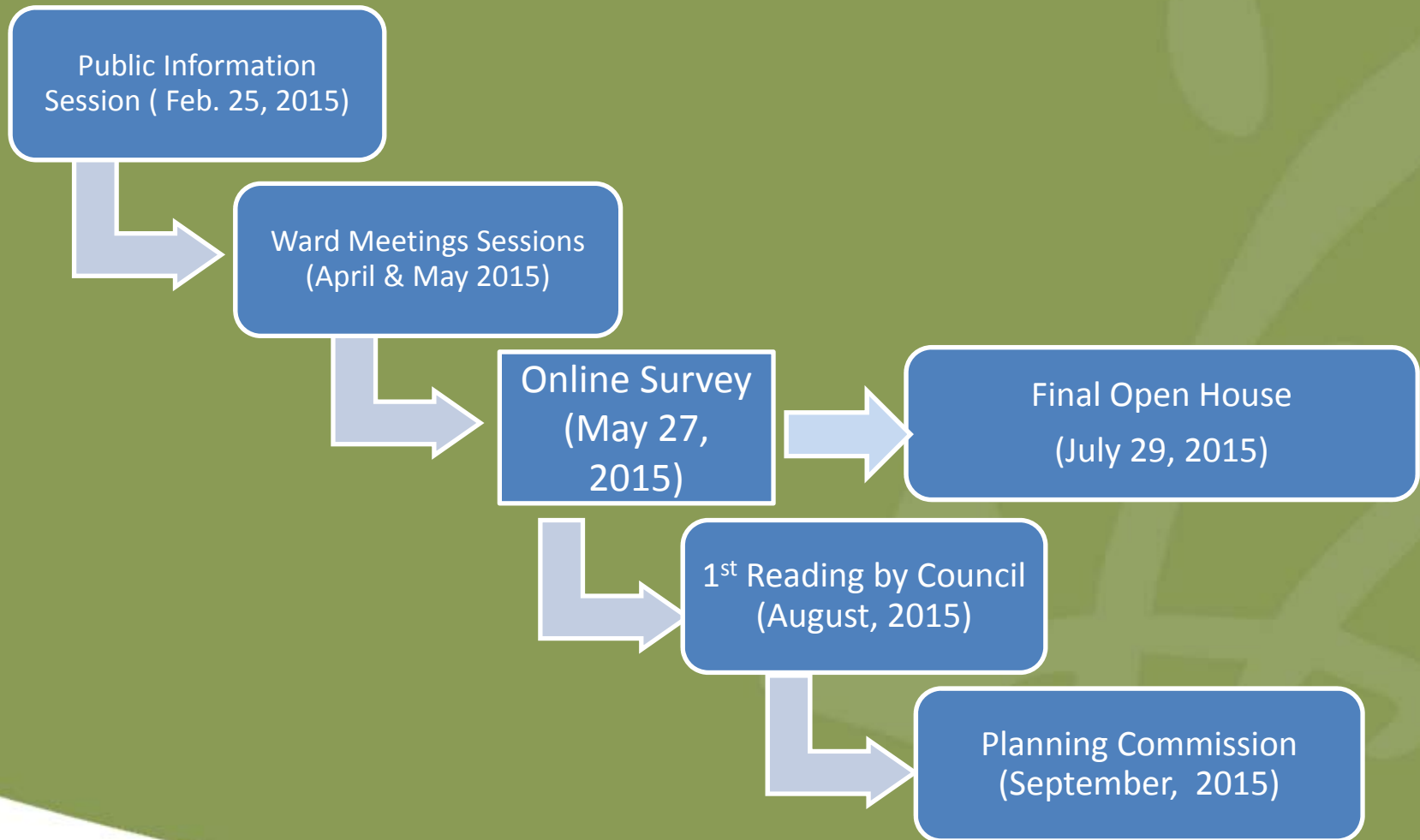


Growing our existing neighbourhoods together



Project Timeline



What is residential infill?

- The development or redevelopment of vacant or underutilized sites at a density higher than what currently exists.

How can infill occur?

- Redevelopment of sites, including the reuse of brownfield sites;
- Development of vacant and/or underutilized lots within previously developed areas; and
- Expansion or conversion of existing buildings to residential buildings.

What is the goal?

- Adopt new standards for residential infill based on best practices and community feedback.

Identified Categories

- More housing options in Residential Single Family Zones.
- Housing on narrower lots
- Increased height in specific zones
- Reduced side yards

Identified Categories(Cont.)

- More units on corner lots
- Parking requirements to reflect number of bedrooms and existence of on-street parking
- Smaller dwelling units

Thank You

Questions